

Movable PSEM Store – Standard Specification

Construction

- Not less than 12-gauge (0.1046 in) steel, lined with 1/2” plywood or 1/2” hardboard or other suitable materials.
- Lid must overlap lid opening by at least one inch.
- Hinges and hasps shall be attached by welding, riveting or bolting (nuts on inside of the box).
- No exposed ferrous metal in the exterior or interior.

Lock

- A steel, case-hardened, five-tumbler padlock, having at least a 3/8” diameter shackle.

Painting

- The surface of the store shall be painted in red.
- The words “DANGER – PYRO. MATERIALS 危險-煙火物料” of not less than 40 mm in height shall be painted in white colour on the lid of the store.

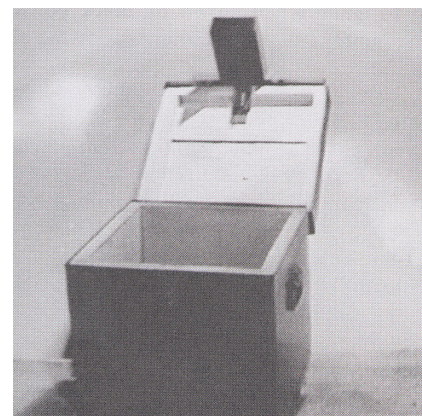
Size

- A movable store may be of any suitable size to meet the operational needs of conveying the required quantities of PSEM to the firing venues. Some common dimensions are:

14” (H) x 16” (W) x 24” - 30” (L)

Other Construction

- The Authority may approve a movable PSEM store of different construction.



A typical movable PSEM store